

# Accès direct aux vues spécifiques

## Concept

L'ensemble des éléments disponibles sont identifiés via les uuids des objets. Ces uuids sont utilisées pour construire les différentes vues de l'interface.

Ex: accès a une hive particulière "http://**URL**/static/ui/index.html#/hive/b4bb2ac6-ead4-f86f-d1e5-366d3fa6e0af"

- pour récupérer la liste des uuids des hosts :

## Glossaire

nom\_du\_site : adresse http de votre serveur

uuid : identifiant unique d'un élément

nom\_du\_host : Nom d'un host

nom\_du\_check: Nom d'un check

uuid\_du\_host: uuid d'un host

uuid\_du\_check : uuid d'un check

## Récupérer les uuids

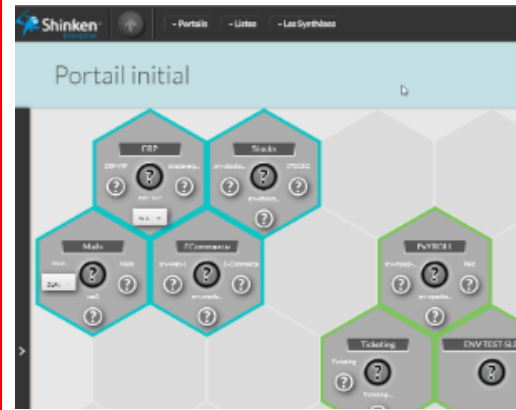
récupération de l'ensemble des uuids (hôte et clusters)  <a href="#">/lookup/</a>	nom_du_site/lookup/	<pre>[["Cluster ESX", "ec99f1a8ae5b11e7b69c08002714e815"], ["ESX-1", "eb0363f66e5811e48f07080027bb71d2"], ["ESX-2", "eb03670c6e5811e48f07080027bb71d2"], ["Local Host", "38295e2c477511e7a79e08002706063c"], ["Shinken", "38296368477511e7a79e08002706063c"]]</pre>
	nom_du_site/lookup/filter (ex=nom_du_site/lookup/ESX)	<pre>[["Cluster ESX", "ec99f1a8ae5b11e7b69c08002714e815"], ["ESX-1", "eb0363f66e5811e48f07080027bb71d2"], ["ESX-2", "eb03670c6e5811e48f07080027bb71d2"]]</pre>
	Les éléments qui ont des checks accrochés <a href="#">/lookup/?with_checks_only=1</a>	<pre>[["Local Host", "38295e2c477511e7a79e08002706063c"], ["Shinken", "38296368477511e7a79e08002706063c"]]</pre>

Récupération d'un élément spécifique via le nom  /getuuid	nom de l'host  <a href="#">nom_du_site/get_uuid?hname=ESX-1</a>	{ "uuid": "eb0363f66e5811e48f07080027bb71d2" }
	nom de l'host + nom d'un check  <a href="#">nom_du_site/get_uuid?hname=Shinken&amp;sdesc=Synchronizer Alive</a>	{ "uuid": "38296368477511e7a79e08002706063c-546aff9896a311e58dd10800278b6434" }

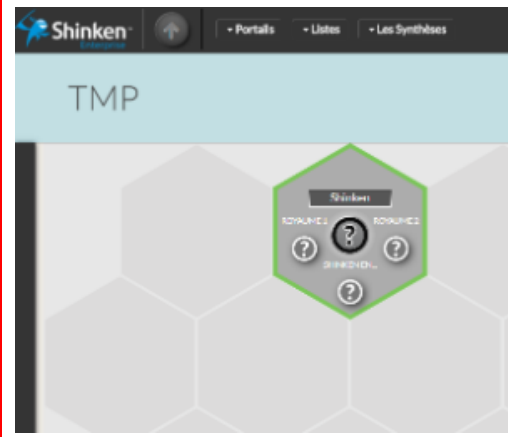
lookup_service	<a href="#">nom_du_site/lookup-service/38296368477511e7a79e08002706063c</a>	[["Arbiter - Alive", "38296368477511e7a79e08002706063c-6df9a9c4a44b11e7980208002714e815"], "38296368477511e7a79e08002706063c-546aff9896a311e58dd10800278b6434" ]]
----------------	---	--

**Lien via uuid**

Vue par défaut  
[nom\\_du\\_site/static/ui/index.html#/](#)



Hive spécifique  
[nom\\_du\\_site/static/ui/index.html#/hive/4da69552-7734-3028-e7cd-ee3000afdac6](#)



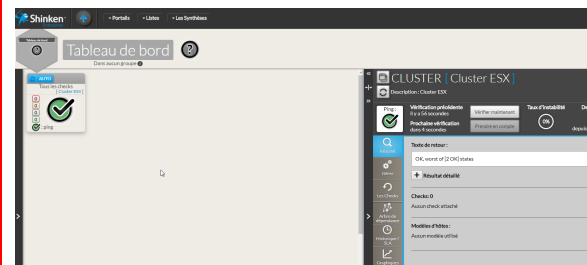
Dashboard

nom\_du\_site/static/ui/index.html#/dashboard/265bb6b5-0c72-67c4-1e3e-cf2d8c4cee0b



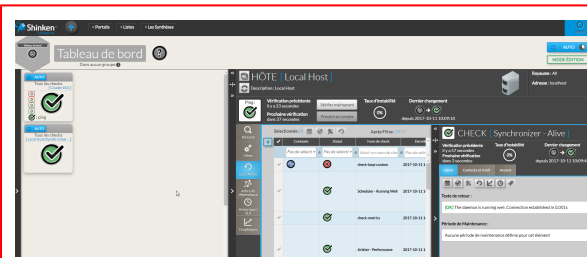
Dashboard + Detail host

nom\_du\_site/static/ui/index.html#/dashboard/149527a3-4523-391d-5780-d42472381562/detail/ec99f1a8ae5b11e7b69c08002714e815/summary



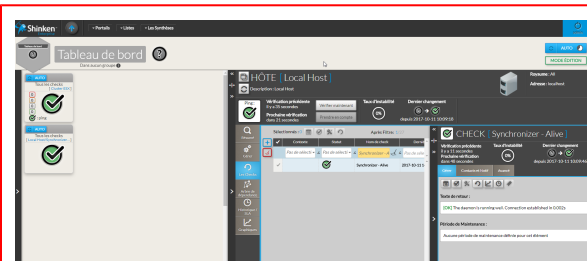
Dashboard + Detail host + detail check

nom\_du\_site/static/ui/index.html#/dashboard/149527a3-4523-391d-5780-d42472381562/detail/38295e2c477511e7a79e08002706063c/checks/detail/38295e2c477511e7a79e08002706063c-546aff9896a311e58dd10800278b6434



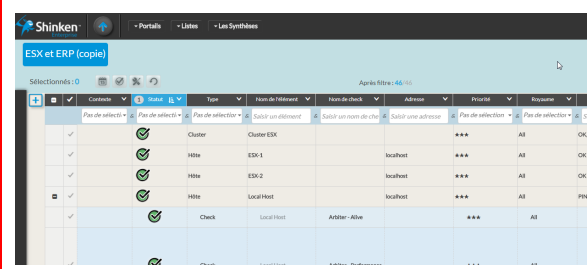
Dashboard + Detail host + detail check + filtre sur la liste

nom\_du\_site/static/ui/index.html#/dashboard/149527a3-4523-391d-5780-d42472381562/detail/38295e2c477511e7a79e08002706063c/checks/detail/38295e2c477511e7a79e08002706063c-546aff9896a311e58dd10800278b6434?listDetailFilter=%255B%257B%2522service\_description%2522%253A%2522Synchronizer%2520-%2520Alive%2522%257D%255D



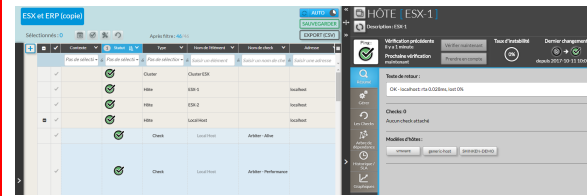
Liste

nom\_du\_site/static/ui/index.html#/list/2bf1f5c8-16c1-304f-15de-e7ea00395152



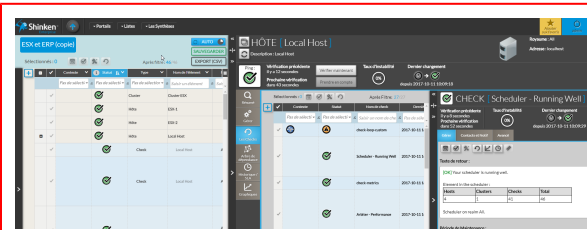
Liste + détail host

nom\_du\_site/static/ui/index.html#/list/2bf1f5c8-16c1-304f-15de-e7ea00395152/detail/eb0363f66e5811e48f07080027bb71d2/summary



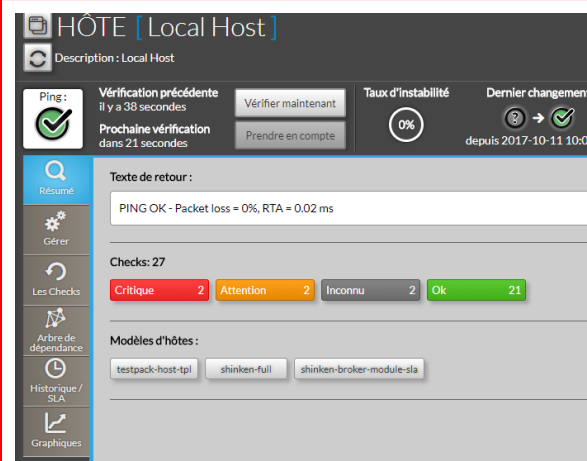
Liste + détail host + detail check

nom\_du\_site/static/ui/index.html#/list/2bf1f5c8-16c1-304f-15de-e7ea00395152/detail/38295e2c477511e7a79e08002706063c/checks/detail/38295e2c477511e7a79e08002706063c-d9fa49a896a211e5ae0b0800278b6434



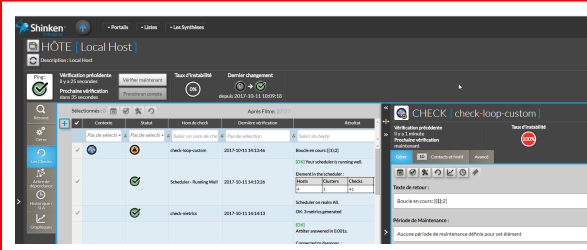
Détail host

nom\_du\_site/static/ui/index.html#/hosts/38295e2c477511e7a79e08002706063c/summary



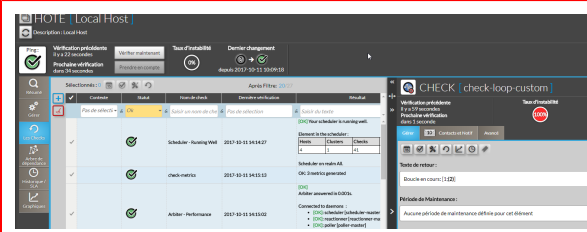
Détail host + détail check

nom\_du\_site/static/ui/index.html#/hosts/38295e2c477511e7a79e08002706063c/checks/detail/38295e2c477511e7a79e08002706063c-f311f77a5f704d79c2c89a71cc3de058



Détail host + détail check + filtre liste check

nom\_du\_site/static/ui/index.html#/hosts/38295e2c477511e7a79e08002706063c/checks/detail/38295e2c477511e7a79e08002706063c-f311f77a5f704d79c2c89a71cc3de058?listDetailFilter=%255B%257B%2522status%2522%253A%255B%2522ok%2522%255D%257D%255D



## Lien via name

nom\_du\_site/detail-by-name/  
/Shinken

The screenshot shows the Shinken web interface for the host 'HÔTE [Shinken]'. The interface includes a navigation menu on the left with options like 'Résumé', 'Gérer', 'Les Checks', 'Arbre de dépendance', 'Historique / SLA', and 'Graphiques'. The main content area displays the host's status: 'Ping: OK' (17 seconds), 'Prochaine vérification dans 42 secondes', 'Taux d'instabilité: 0%', and 'Dernier changement depuis 2017-10-03 12:15:46'. Below this, the 'Texte de retour' is 'PING OK - Packet loss = 0%, RTA = 0.02 ms'. The 'Checks: 14' section shows a summary: Critique 0, Attention 0, Inconnu 0, and Ok 14. The 'Modèles d'hôtes' section lists 'shinken-full'.

nom\_du\_site/detail-by-name/Shinken  
/checks/Synchronizer - Alive

The screenshot shows the details of the 'CHECK: Synchronizer - Alive' in the Shinken web interface. The main content area displays the check's status: 'CHECK: Synchronizer - Alive' with a 'Ping' icon and 'OK' status. The 'Texte de retour' is 'OK The daemon is running well. Conn: OK'. The interface also shows a table of checks with columns for 'Nom du check', 'Dernière vérification', and 'Statut'. The table contains one entry: 'Synchronizer - Alive' with a status of 'OK' and a last verification time of '2017-10-11 12:05:00'.