

# Accès direct aux vues spécifiques

## Concept

L'ensemble des éléments disponibles sont identifiés via les uuids des objets. Ces uuids sont utilisées pour construire les différentes vues de l'interface.

Ex: accès a une hive particulière "http://**URL**/static/ui/index.html#/hive/b4bb2ac6-ead4-f86f-d1e5-366d3fa6e0af"

- pour récupérer la liste des uuids des hosts :

## Glossaire

nom\_du\_site : adresse http de votre serveur

uuid : identifiant unique d'un élément

nom\_du\_host : Nom d'un host

nom\_du\_check: Nom d'un check

uuid\_du\_host: uuid d'un host

uuid\_du\_check : uuid d'un check

## Récupérer les uuids

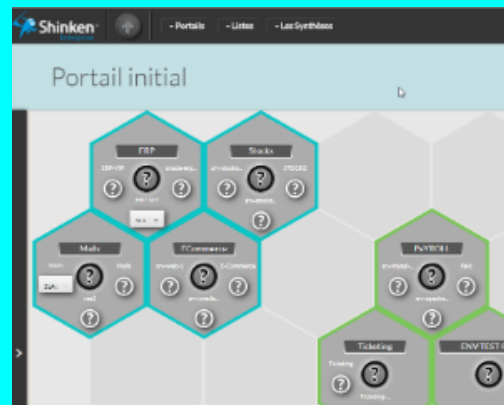
<b>récupération de l'ensemble des uuids (hôte et clusters)</b>	nom_du_site/lookup/	<pre>[["Cluster ESX", "ec99f1a8ae5b11e7b69c08002714e815"], ["ESX-1", "eb0363f66e5811e48f07080027bb71d2"], ["ESX-2", "eb03670c6e5811e48f07080027bb71d2"], ["Local Host", "38295e2c477511e7a79e08002706063c"], ["Shinken", "38296368477511e7a79e08002706063c"]]</pre>
<b>/lookup/</b>	nom_du_site/lookup/filter (ex=nom_du_site/lookup/ESX)	<pre>[["Cluster ESX", "ec99f1a8ae5b11e7b69c08002714e815"], ["ESX-1", "eb0363f66e5811e48f07080027bb71d2"], ["ESX-2", "eb03670c6e5811e48f07080027bb71d2"]]</pre>
	<b>Les éléments qui ont des checks accrochés</b> /lookup/?with_checks_only=1	<pre>[["Local Host", "38295e2c477511e7a79e08002706063c"], ["Shinken", "38296368477511e7a79e08002706063c"]]</pre>

Récupération d'un élément spécifique via le nom <code>/getuuid</code>	nom de l'host <code>nom_du_site/get_uuid?hname=ESX-1</code>	<code>{"uuid": "eb0363f66e5811e48f07080027bb71d2"}</code>
	nom de l'host + nom d'un check <code>nom_du_site/get_uuid?hname=Shinken&amp;sdesc=Synchronizer Alive</code>	<code>{"uuid": "38296368477511e7a79e08002706063c-546aff9896a311e58dd10800278b6434"}</code>

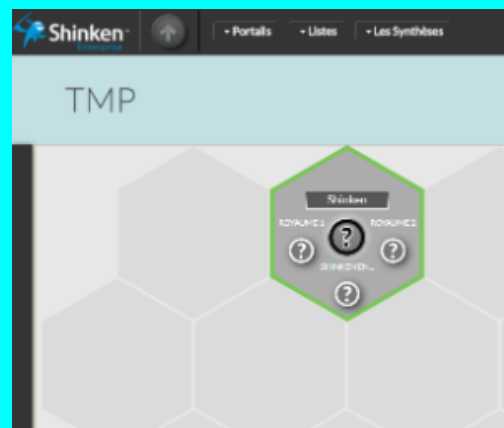
<code>lookup_service</code>	<code>nom_du_site/lookup-service/38296368477511e7a79e08002706063c</code>	<code>[["Arbiter - Alive", "38296368477511e7a79e08002706063c-6dffa9c4a44b11e7980208002714e815"], "38296368477511e7a79e08002706063c-546aff9896a311e58dd10800278b6434"]]</code>
-----------------------------	--	---

**Lien via uuid**

Vue par défaut  
[nom\\_du\\_site/static/ui/index.html#](#)



Hive spécifique  
[nom\\_du\\_site/static/ui/index.html#/hive/4da69552-7734-3028-e7cd-ee3000afdac6](#)



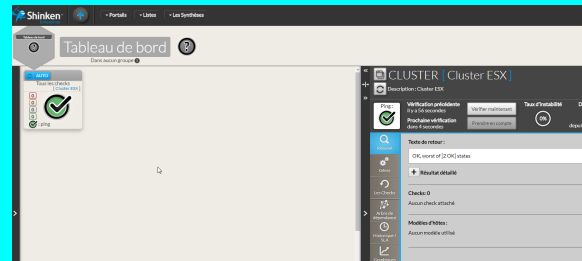
## Dashboard

[nom\\_du\\_site/static/ui/index.html#/dashboard/265bb6b5-0c72-67c4-1e3e-cf2d8c4cee0b](http://nom_du_site/static/ui/index.html#/dashboard/265bb6b5-0c72-67c4-1e3e-cf2d8c4cee0b)



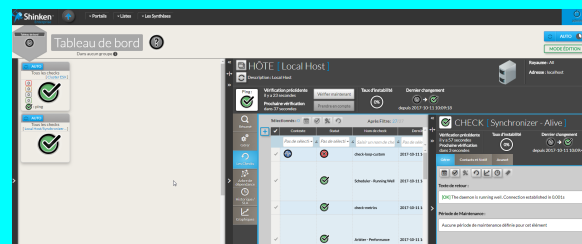
## Dashboard + Detail host

[nom\\_du\\_site/static/ui/index.html#/dashboard/149527a3-4523-391d-5780-d42472381562/detail/ec99f1a8ae5b11e7b69c08002714e815/summary](http://nom_du_site/static/ui/index.html#/dashboard/149527a3-4523-391d-5780-d42472381562/detail/ec99f1a8ae5b11e7b69c08002714e815/summary)



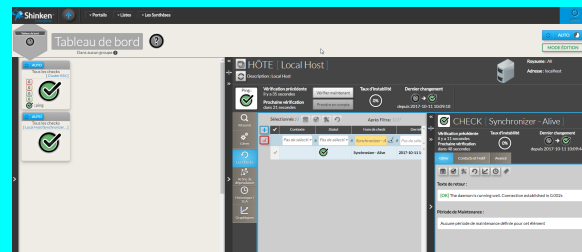
## Dashboard + Detail host + detail check

[nom\\_du\\_site/static/ui/index.html#/dashboard/149527a3-4523-391d-5780-d42472381562/detail/38295e2c477511e7a79e08002706063c/checks/detail/38295e2c477511e7a79e08002706063c-546aff9896a311e58dd10800278b6434](http://nom_du_site/static/ui/index.html#/dashboard/149527a3-4523-391d-5780-d42472381562/detail/38295e2c477511e7a79e08002706063c/checks/detail/38295e2c477511e7a79e08002706063c-546aff9896a311e58dd10800278b6434)



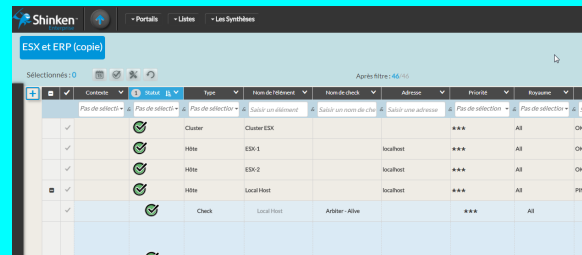
## Dashboard + Detail host + detail check + filtre sur la liste

[nom\\_du\\_site/static/ui/index.html#/dashboard/149527a3-4523-391d-5780-d42472381562/detail/38295e2c477511e7a79e08002706063c/checks/detail/38295e2c477511e7a79e08002706063c-546aff9896a311e58dd10800278b6434?listDetailFilter=%255B%257B%2522service\\_description%2522%253A%2522Synchronizer%2520-%2520Alive%2522%257D%255D](http://nom_du_site/static/ui/index.html#/dashboard/149527a3-4523-391d-5780-d42472381562/detail/38295e2c477511e7a79e08002706063c/checks/detail/38295e2c477511e7a79e08002706063c-546aff9896a311e58dd10800278b6434?listDetailFilter=%255B%257B%2522service_description%2522%253A%2522Synchronizer%2520-%2520Alive%2522%257D%255D)



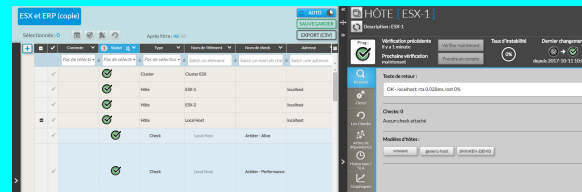
## Liste

[nom\\_du\\_site/static/ui/index.html#/list/2bf1f5c8-16c1-304f-15de-e7ea00395152](http://nom_du_site/static/ui/index.html#/list/2bf1f5c8-16c1-304f-15de-e7ea00395152)



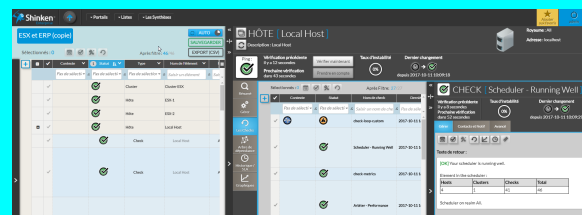
## Liste + détail host

[nom\\_du\\_site/static/ui/index.html#/list/2bf1f5c8-16c1-304f-15de-e7ea00395152/detail/eb036f66e5811e48f07080027bb71d2/summary](http://nom_du_site/static/ui/index.html#/list/2bf1f5c8-16c1-304f-15de-e7ea00395152/detail/eb036f66e5811e48f07080027bb71d2/summary)



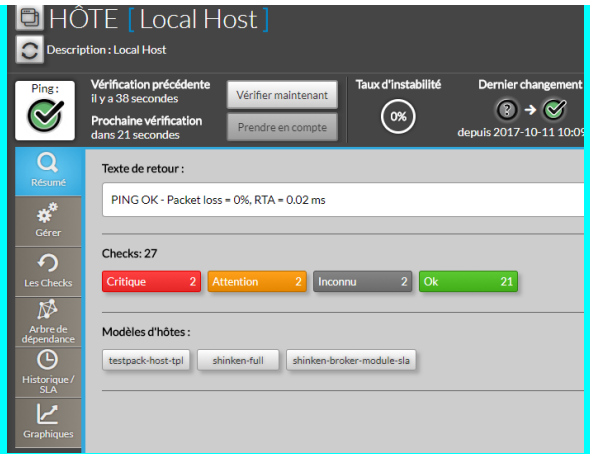
## Liste + détail host + detail check

[nom\\_du\\_site/static/ui/index.html#/list/2bf1f5c8-16c1-304f-15de-e7ea00395152/detail/38295e2c477511e7a79e08002706063c/checks/detail/38295e2c477511e7a79e08002706063c-d9fa49a896a211e5ae0b0800278b6434](http://nom_du_site/static/ui/index.html#/list/2bf1f5c8-16c1-304f-15de-e7ea00395152/detail/38295e2c477511e7a79e08002706063c/checks/detail/38295e2c477511e7a79e08002706063c-d9fa49a896a211e5ae0b0800278b6434)



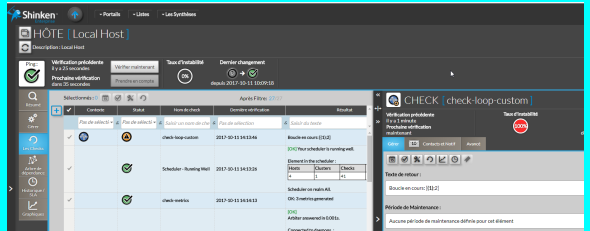
## Détail host

[nom\\_du\\_site/static/ui/index.html#/hosts/38295e2c477511e7a79e08002706063c/summary](http://nom_du_site/static/ui/index.html#/hosts/38295e2c477511e7a79e08002706063c/summary)



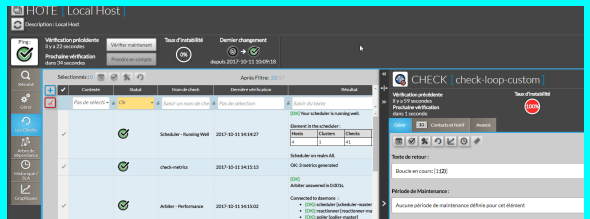
### Détail host + détail check

nom\_du\_site/static/ui/index.html#/hosts/  
/38295e2c477511e7a79e08002706063c/checks/detail  
/38295e2c477511e7a79e08002706063c-  
f311f77a5f704d79c2c89a71cc3de058



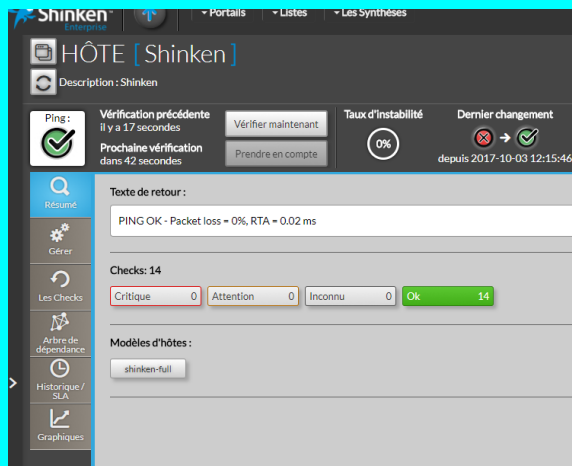
### Détail host + détail check + filtre liste check

nom\_du\_site/static/ui/index.html#/hosts/  
/38295e2c477511e7a79e08002706063c/checks/detail  
/38295e2c477511e7a79e08002706063c-  
f311f77a5f704d79c2c89a71cc3de058?listDetailFilter=%255B%  
257B%2522status%2522%253A%255B%2522ok%2522%255D%  
257D%255D



## Lien via name

nom\_du\_site/detail-by-name  
/Shinken



nom\_du\_site/detail-by-name/Shinken  
/checks/Synchronizer - Alive

