

Widget Status

Description

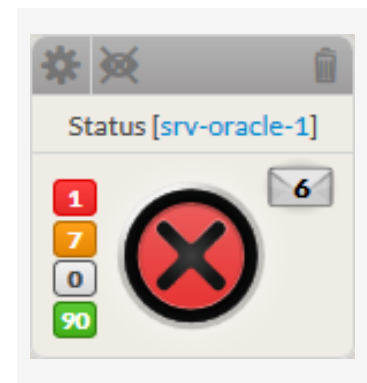
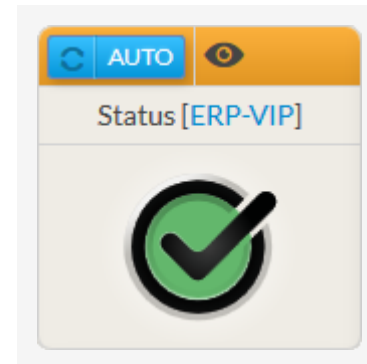
The Status widget provides an overview of a host, a cluster or a check.

It will contain:

- The name of the element
- The Status and its Context (see [Monitoring logic](#) for more details)
- Notifications sent (in case an element becomes WARNING or CRITICAL)
 - Notifications can be configured in Shinken Administration UI (see [Notifications](#) and [Notifications Way](#) chapters)
 - If some notification has been sent for this element, an envelope will be displayed with the number of notifications on the right.

- The widget also shows the number of checks sorted by status:

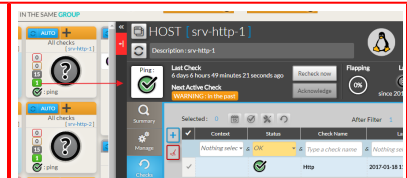
Red	Critical checks
Orange	Warning checks
Grey	Unknown checks
Green	Ok checks



Usage

If the status refers to an element, a click on the widget will open the Detailed View Panel providing details on the element (see the [Host Detail View](#) chapter).

- For a host, clicking on one of the checks summary box, will directly open the Detail panel on the tab checks panel.
- The list of checks will be filtered to only display checks matching this status.
- To get the full list of checks, simply remove the filter (See [Checks Tab](#) chapter).



Configuration

1. Select a host or cluster name in the first list.
 - The total number of hosts and clusters will be displayed near "Select Host/Cluster" **(1)**.
 - If no host selected yet, the list of available hosts will automatically opened.
 - You can search (filter) for a host name, typing into the input on top of the list **(3)**.
 - You can clean the current selection by clicking on the swipe icon **(2)**.
2. Once your element is selected, if you want to monitor a specific check, you just have to select check name inside the second list.
3. When configured, press the SUBMIT button.

